

Telescopic 4



features & benefits

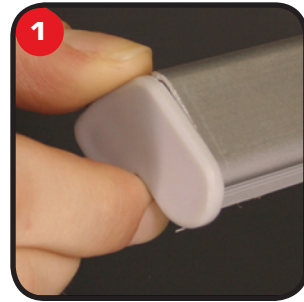
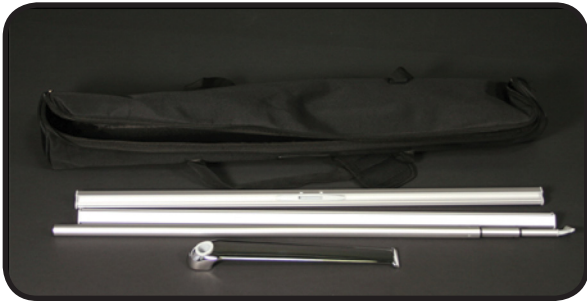
*Single sided telescopic banner stand/w
adhesive rails & bag
TEL-4*

| hardware specifications | graphic specifications | additional info |
|--|---|---|
| Max height: 79" Foot print: 31.75" X 14.25" | 31"w x 77"h 1/2"graphic bleed top and bottom | Shipping weight: 32 lbs. Shipping dim: 36" x 10.5" x 15" |

We are continually improving and modifying our product range and reserve the right to vary the specifications without prior notice. All dimensions and weights quoted are approximate and we accept no responsibility for variance. E&OE.

Assembly Instructions

Graphic Application



1
Remove end caps from graphic rails

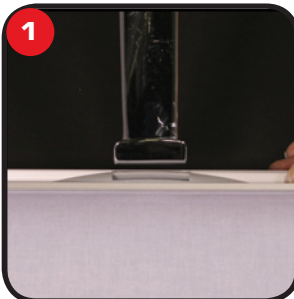


2
Open graphic rails



3
Insert graphic into graphic rails.

Unit Instructions



1
Insert and secure unit foot in slot on bottom rail.



2
Insert and secure top of pole in slot on top rail.



3
Insert and secure bottom of the pole into foot of the unit



4
Extend telescopic pole to desired height.

Repeat steps in reverse to retract and Store